



BORNHOLM

PLEASURE CRAFT GUIDE

South Coast
Baltic



Where boating adventure begins

HARBOUR OVERVIEW

A RØNNE HARBOUR	2
B RØNNE MARINA/NØRREKAAS	4
C HASLE HARBOUR	6
D HELLIGPEDER HARBOUR	8
E TEGLKAAS HARBOUR	10
F VANG HARBOUR	12
G HAMMERHAVN HARBOUR	14
H SANDVIG HARBOUR	16
I ALLINGE HARBOUR	18
J TEJN HARBOUR	20
K GUDHJEM'S WEST HARBOUR/NØRRESAND	22
L GUDHJEM'S EAST HARBOUR	26
M CHRISTIANSØ HARBOUR	28
N MELSTED HARBOUR	30
O LISTED HARBOUR	32
P SVANEKE HARBOUR	34
Q AARSDALE HARBOUR	36
R NEXØ HARBOUR	38
S SNOGEBÆK HARBOUR	40
T BAKKERNE HARBOUR	42
U BODERNE HARBOUR	44
V ARNAGER HARBOUR	46



> This is an informative guide and must NOT be used as an alternative to nautical charts or harbour pilots. Nautical chart: 180, 181, 188 and 189 depict the reliable routes to a mariner's paradise.

WELCOME TO BORNHOLM

Experience the yachters' paradise Bornholm and its 140-km coastline that is never further away than a day of sailing, regardless of whether you are coming from Sweden, Germany or Poland or another location in Denmark.

Experience the picturesque rocky coasts of northern Bornholm and the miles of silvery sandy beaches of southern Bornholm. Enjoy a brilliant concoction of unique urban harbours, idyllic fishing hamlets and harbours nestled in magnificent natural settings.

When Bornholm comes into view, you feel an unusual breeze coming from the rocky island: the rush of history. Because as you approach Bornholm by sea, you are cresting the same waves that Vikings, pirates, crusaders and trading ships have been cresting for more than 1,000 years. Throughout its history, Bornholm has hosted colourful legendary visitors, both welcome and uninvited, and evidence of their visits is found all over the island.

Castles and strongholds were necessary because Bornholm has always been a key target for the powers that be in the Baltic Sea Region.

As you enter Hammerhavn Harbour, Hammershus towers high above you. This is the largest castle ruin in northern Europe, and back when the castle was newly completed and intact, it was used for assembling large armies that set out on crusades to the then pagan Baltic States.

As you enter Gudhjem harbour, you are calling at a port that was also home to Vikings. Today, Gudhjem is one of the areas of Denmark's with the richest finds of Viking settlements. Viking treasures are still being unearthed on the island, as are artefacts from heavily laden merchant ships.

Bornholm's most characteristic harbours are those blasted out of rock and nestled in a unique village graced by white smokehouse chimneys where the sea's "silver" (herring) is smoked into the renowned "Gold of Bornholm". Yet Bornholm also boasts modern, fully equipped marinas, commercial fishing harbours and unique "off-shore harbours".

Bornholm abounds with quiet coves complete with sandy beaches – beautiful for riding at anchor. Or vertical cliffs in natural harbours and coves where you are moored to a rock as your barbecue grill sends wafts of savoury smoke skyward.

No trip to Bornholm would be complete without a side trip to the Ertholmene archipelago, roughly 10 nautical miles north-east of Bornholm. The natural harbour separating the islands Christiansø and Frederiksø is part of the world's first naval base. It was founded to help protect Denmark against the Swedish fleet. Today, the islands comprise one of the most unique, beautiful and well-preserved communities in Europe where the some 100 inhabitants contribute to a must-have experience that defies explanation.

The island's inland areas abound with unique experiences, too, with countless sights of interest and a wide array of craft artists scattered all over the island. Bornholm has also become a gourmet island and is world-renowned for local specialities, which visiting yachters can enjoy.

From rocky landscapes and coasts in the north to beaches in the south, it is always possible to find memorable experiences for children and adults alike. This is true no matter what the weather, but having more hours of sunshine than anywhere else in Denmark is Bornholm's extra asset.



< Index map
(see front-page flap)

Pictogram explanation and information >
(see back-page flap)

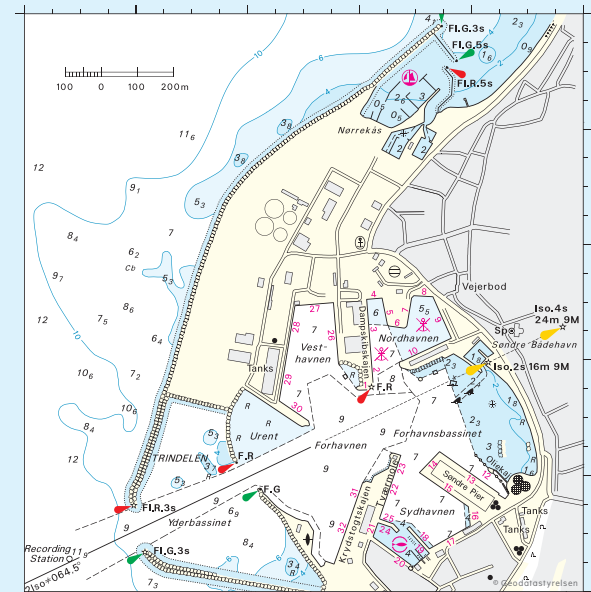
Hammershus Castle Ruin
Hammerhavnen boat trips

HARBOUR OVERVIEW

A RØNNE HARBOUR	2
B RØNNE MARINA/NØRREKAAS	4
C HASLE HARBOUR	6
D HELLIGPEDER HARBOUR	8
E TEGLKAAS HARBOUR	10
F VANG HARBOUR	12
G HAMMERHAVN HARBOUR	14
H SANDVIG HARBOUR	16
I ALLINGE HARBOUR	18
J TEJN HARBOUR	20
K GUDHJEM'S WEST HARBOUR/NØRRESAND	22
L GUDHJEM'S EAST HARBOUR	26
M CHRISTIANSØ HARBOUR	28
N MELSTED HARBOUR	30
O LISTED HARBOUR	32
P SVANEKE HARBOUR	34
Q AARSDALE HARBOUR	36
R NEXØ HARBOUR	38
S SNOGEBÆK HARBOUR	40
T BAKKERNE HARBOUR	42
U BODERNE HARBOUR	44
V ARNAGER HARBOUR	46



> This is an informative guide and must NOT be used as an alternative to nautical charts or harbour pilots. Nautical chart: 180, 181, 188 and 189 depict the reliable routes to a mariner's paradise.



The Port of Rønne is Bornholm's largest harbour for commercial and ferry traffic.

Pleasure craft are referred to Rønne's Nørrekaas Marina, roughly one nautical mile to the north.



EXCURSIONS



Old quarter



Skt. Nicolai Church



Bornholms Museum

Hjorths Ceramics Factory Museum
Citadel

0,5 km

Erichsens Gård / Museum
Defence Museum

0,5 km

HARBOUR OVERVIEW

A RØNNE HARBOUR	2
B RØNNE MARINA/NØRREKAAS	4
C HASLE HARBOUR	6
D HELLIGPEDER HARBOUR	8
E TEGLKAAS HARBOUR	10
F VANG HARBOUR	12
G HAMMERHAVN HARBOUR	14
H SANDVIG HARBOUR	16
I ALLINGE HARBOUR	18
J TEJN HARBOUR	20
K GUDHJEM'S WEST HARBOUR/NØRRESAND	22
L GUDHJEM'S EAST HARBOUR	26
M CHRISTIANSØ HARBOUR	28
N MELSTED HARBOUR	30
O LISTED HARBOUR	32
P SVANEKE HARBOUR	34
Q AARSDALE HARBOUR	36
R NEXØ HARBOUR	38
S SNOGEBÆK HARBOUR	40
T BAKKERNE HARBOUR	42
U BODERNE HARBOUR	44
V ARNAGER HARBOUR	46



> This is an informative guide and must NOT be used as an alternative to nautical charts or harbour pilots. Nautical chart: 180, 181, 188 and 189 depict the reliable routes to a mariner's paradise.



Nørrekaas is a modern marina with all the amenities required by visiting yachters, including a new Café Kaas that serves everything your heart desires.

Nørrekaas and the harbour master welcome and serve visiting yachters along all docks in the marina. Visiting yachters account for around 4,000 overnight stays at the marina each year. Although the marina is easy and safe to approach, please respect the two cardinal marks indicating a rocky reef about one-and-a-half kilometres north of the marina. The marina has a playground and its own bathing beach with a bathing jetty. A marine workshop and a large boating-equipment shop are located at the marina.

200 m

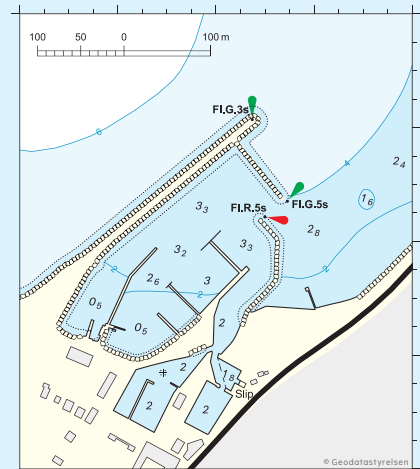


The centre of Rønne, the main town of Bornholm, is only 400 metres from the marina, offering everything a yachter could desire. The town has a well-appointed shopping district, a cosy, versatile restaurant and café environment and it is the centre of regional bus services for the entire island. Bicycle and car rental firms are located only two minutes on foot from the marina.

Rønne has a historic old quarter which includes the 19th century townhouse museum Erichsens Gaard, Bornholm Museum (of cultural history), Hjorths Ceramics Factory Museum, the Defence Museum and the Wooden Boat Shipyard, each of which have interesting stories to tell.

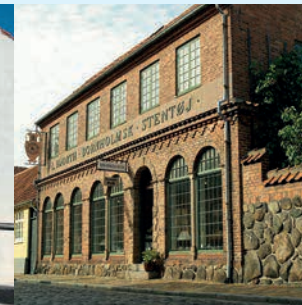
In and around Rønne you will also find fine bathing beaches, an 18-hole golf course, a bowling alley, indoor swimming baths, a concert hall, a cinema, a large library, as well as indoor markets and a local farmer's market on the main square.

Also, the oldest still-functioning theatre building in Denmark features theatrical and revue performances.



© Geodatastyrelsen

EXCURSIONS



Harbor cafes

Hjorths Ceramics Factory Museum

Citadel

1 km

Bornholms Museum
 Defence Museum

1 km

Old quarter
 Erichsens Gård / Museum

Skt. Nicolai Church

5



HARBOUR OVERVIEW

A RØNNE HARBOUR	2
B RØNNE MARINA/NØRREKAAS	4
C HASLE HARBOUR	6
D HELLIGPEDER HARBOUR	8
E TEGLKAAS HARBOUR	10
F VANG HARBOUR	12
G HAMMERHAVN HARBOUR	14
H SANDVIG HARBOUR	16
I ALLINGE HARBOUR	18
J TEJN HARBOUR	20
K GUDHJEM'S WEST HARBOUR/NØRRESAND	22
L GUDHJEM'S EAST HARBOUR	26
M CHRISTIANSØ HARBOUR	28
N MELSTED HARBOUR	30
O LISTED HARBOUR	32
P SVANEKE HARBOUR	34
Q AARSDALE HARBOUR	36
R NEXØ HARBOUR	38
S SNOGEBÆK HARBOUR	40
T BAKKERNE HARBOUR	42
U BODERNE HARBOUR	44
V ARNAGER HARBOUR	46



> This is an informative guide and must NOT be used as an alternative to nautical charts or harbour pilots. Nautical chart: 180, 181, 188 and 189 depict the reliable routes to a mariner's paradise.



Hasle Harbour is one of the biggest ports on the isle of sunshine. The harbour is safe to enter day and night in all kinds of weather and it is well protected. There is always space for visiting yachters.

Since 2010, the authorities have invested more than DKK 25 million in converting the harbour by adding recreational facilities for the benefit of the some 1,500 visiting yachters who spend the night here.

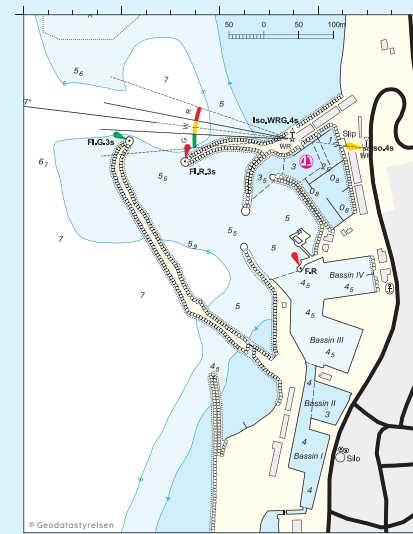
The harbour now has a canal environment and the loveliest harbour bath in Denmark, with an outdoor hot tub and sauna. You can warm up here after a cold dip in the sea, if you like. Nearby is a new urban beach with a café.

The harbour still has an active commercial fishery, where it is possible to buy fish direct from fishing vessels, and its own harbour smith.

The harbour has also become a kayaking hot-spot where it is possible to hire and/or learn to paddle a kayak. The waterfront also features a new maritime museum, Columbus, where the old fishing boat engines are started every day, to enable visitors to experience how a real fishery port sounds.

Hasle has a good shopping and restaurant district. The "Grønbechs Gård" cultural centre with exhibitions of art and craft art is also in Hasle. Bornholm's rocky coast begins just north of the harbour area. South of the harbour are splendid sandy beaches and vast wooded areas with former clay and coal pits, where the interesting cultural history of Hasle Klinker is presented.

At the end of the new canal is an interesting activity area, a herring smokehouse museum and an active herring smokehouse where it possible to eat freshly smoked herring served direct from the open smokehouse chimneys.



EXCURSIONS



- Grønbechs Gård / Gallery 0,4 km
- Museum Smokehouses 1 km
- Svartingedalen / Valley 3 km
- Rubinsøen / Lake 2 km

Harbour

-
-
-
-
-
-
-
-

1 km

HARBOUR OVERVIEW

A RØNNE HARBOUR	2
B RØNNE MARINA/NØRREKAAS	4
C HASLE HARBOUR	6
D HELLIGPEDER HARBOUR	8
E TEGLKAAS HARBOUR	10
F VANG HARBOUR	12
G HAMMERHAVN HARBOUR	14
H SANDVIG HARBOUR	16
I ALLINGE HARBOUR	18
J TEJN HARBOUR	20
K GUDHJEM'S WEST HARBOUR/NØRRESAND	22
L GUDHJEM'S EAST HARBOUR	26
M CHRISTIANSØ HARBOUR	28
N MELSTED HARBOUR	30
O LISTED HARBOUR	32
P SVANEKE HARBOUR	34
Q AARSDALE HARBOUR	36
R NEXØ HARBOUR	38
S SNOGEBÆK HARBOUR	40
T BAKKERNE HARBOUR	42
U BODERNE HARBOUR	44
V ARNAGER HARBOUR	46



> This is an informative guide and must NOT be used as an alternative to nautical charts or harbour pilots. Nautical chart: 180, 181, 188 and 189 depict the reliable routes to a mariner's paradise.

HELLIGPEDER HARBOUR



Helligpeder is a unique fishing hamlet of great cultural-historical value, where visiting yachters can find space in the outer harbour in mild weather.

The harbour was established in 1870 and comprises two small basins, the innermost of which is usually teeming with local boats. The harbour was originally built for the commercial fishery that was the nerve-centre of the surrounding community.

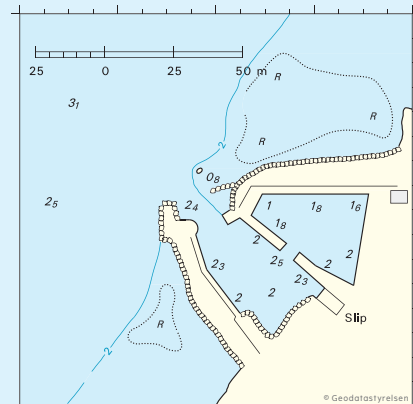
Today, Helligpeder Harbour is run as a private association whose volunteer workforce has safeguarded a vital element of Bornholm's cultural history.

The place name "Helligpeder" appeared in writing for the first time in 1570. The place name allegedly originated from either a sacred spring or a now missing menhir in the area.

Four smokehouses are found in Helligpeder, of which Peter Finne's smokehouse, just south of the harbour, is one of the earliest on Bornholm, built in the 1880s.

The buildings around the harbour, including the harbour shed, the open smokehouse chimneys and the little houses nestled in and on the surrounding sloped landscape, form a magnificent setting in which to enjoy the peace and quiet, as well as beautiful sunsets.

The harbour, which was previously only connected to the rest of Bornholm by the narrow corkscrew road winding its way up the steep coastal slope, is the point of departure for enjoyable rambles to the nature areas of Jons Kapel and Blåskinsdalen.



EXCURSIONS



Jons Chapel 2 km Blåskinsdalen / Valley 3 km Ringebakkerne / Hills 4 km

Harbour

Phone

WC

Phone

WC

HARBOUR OVERVIEW

A RØNNE HARBOUR	2
B RØNNE MARINA/NØRREKAAS	4
C HASLE HARBOUR	6
D HELLIGPEDER HARBOUR	8
E TEGLKAAS HARBOUR	10
F VANG HARBOUR	12
G HAMMERHAVN HARBOUR	14
H SANDVIG HARBOUR	16
I ALLINGE HARBOUR	18
J TEJN HARBOUR	20
K GUDHJEM'S WEST HARBOUR/NØRRESAND	22
L GUDHJEM'S EAST HARBOUR	26
M CHRISTIANSØ HARBOUR	28
N MELSTED HARBOUR	30
O LISTED HARBOUR	32
P SVANEKE HARBOUR	34
Q AARSDALE HARBOUR	36
R NEXØ HARBOUR	38
S SNOGEBÆK HARBOUR	40
T BAKKERNE HARBOUR	42
U BODERNE HARBOUR	44
V ARNAGER HARBOUR	46



> This is an informative guide and must NOT be used as an alternative to nautical charts or harbour pilots. Nautical chart: 180, 181, 188 and 189 depict the reliable routes to a mariner's paradise.

TEGLKAAS HARBOUR



Teglkåas is small, cosy cultural gem of a fishing hamlet, where visiting yachters are welcome in the outer harbour and in the vacant berths in the inner harbour.

Teglkåas was built in 1850 and has been enlarged several times since. The new jetty in the outer harbour calms waves in the harbour and is frequently used as a bathing jetty by locals and visitors.

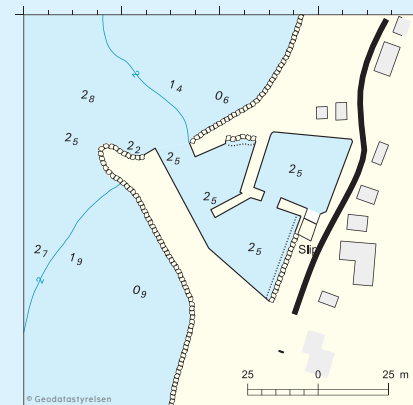
The harbour is a splendid setting for enjoying the tranquillity and magnificent sunsets afforded along the west coast of the island.

The harbour can be entered in nice weather and daylight, but beware of the large boulders north of the harbour entrance.

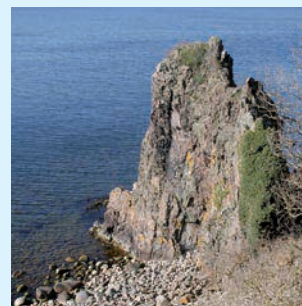
The small hamlet was called "Tegl Kaas" around 1700, and "Kaas Fiskerleje" (Kaas Fishing Hamlet) in the mid-1800s.

In the 1930s, there were around 20 commercial fishermen, primarily fishing for herring and cod.

The two smokehouses, which date to around 1900, remained in use until the 1960s.



EXCURSIONS



- Jons Chapel 1 km Blåskindsalen / Valley 2 km Pleasant pier moments
- Ringebakkerne / Hills 3 km

Harbour

Phone

HARBOUR OVERVIEW

A RØNNE HARBOUR	2
B RØNNE MARINA/NØRREKAAS	4
C HASLE HARBOUR	6
D HELLIGPEDER HARBOUR	8
E TEGLKAAS HARBOUR	10
F VANG HARBOUR	12
G HAMMERHAVN HARBOUR	14
H SANDVIG HARBOUR	16
I ALLINGE HARBOUR	18
J TEJN HARBOUR	20
K GUDHJEM'S WEST HARBOUR/NØRRESAND	22
L GUDHJEM'S EAST HARBOUR	26
M CHRISTIANSØ HARBOUR	28
N MELSTED HARBOUR	30
O LISTED HARBOUR	32
P SVANEKE HARBOUR	34
Q AARSDALE HARBOUR	36
R NEXØ HARBOUR	38
S SNOGEBÆK HARBOUR	40
T BAKKERNE HARBOUR	42
U BODERNE HARBOUR	44
V ARNAGER HARBOUR	46



> This is an informative guide and must NOT be used as an alternative to nautical charts or harbour pilots. Nautical chart: 180, 181, 188 and 189 depict the reliable routes to a mariner's paradise.



Vang Harbour has three basins. New wooden jetties have been built in the two southernmost basins where there is always space for visiting yachters.

A barbecuing shelter has been set up close to the harbour's public toilets and bathing facility, all of which are at the disposal of visitors.



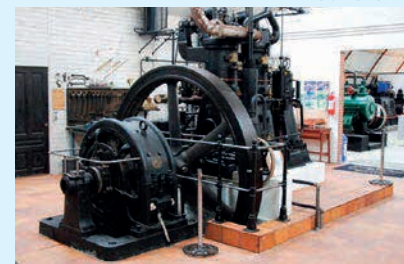
Bixen, a summer shop, will procure anything not already stocked on its shelves. Vang Harbour was built as a shipping port for granite, and in good weather schooners up to thirty metres long still visit.

The history of the granite industry is presented in and around the waterfront area, both the more recent history in Ringebakkerne Hills and the earlier history in the fishery shed, the stonecutting workshop (now a gallery), and next to the monuments depicting the frequently unpaid work of a stonemason. In addition to presenting information about Bornholm's recent granite-history, Vang Pier is the site of north-west Bornholm's new sandy beach with a 1-2-3 metre diving platform and good angling spots. In mild weather, a beach party is held here attended by 1,000 young people bathing and partying to music provided by DJs.

The picturesque village spread across the steep coastal slope affords splendid dining opportunities. Vang is also the point of departure for scenic rambles around Slotslyngen, Ringebakkerne Hills with their many abandoned quarries, splendid mill ponds supplying water to Bornholm's only overshot waterwheel mill, artist Peter Bonnén's bridge across the ravine at the quarry south of the harbour, and Pissebækken stream with the highest waterfall in Denmark (although sometimes there is no water running due to Bornholm's long sunny summers).



EXCURSIONS



Waterwheel mill	0,5 km	Stone Quarry and Bridge	1 km	Ringebakkerne / Hills	1 km
Vang Pier	0,5 km	Finnedalen / Valley	2 km	Pissebækken Waterfall	
Borrelyngen	2 km	Technical Collection	3 km		



HARBOUR OVERVIEW

A RØNNE HARBOUR	2
B RØNNE MARINA/NØRREKAAS	4
C HASLE HARBOUR	6
D HELLIGPEDER HARBOUR	8
E TEGLKAAS HARBOUR	10
F VANG HARBOUR	12
G HAMMERHAVN HARBOUR	14
H SANDVIG HARBOUR	16
I ALLINGE HARBOUR	18
J TEJN HARBOUR	20
K GUDHJEM'S WEST HARBOUR/NØRRESAND	22
L GUDHJEM'S EAST HARBOUR	26
M CHRISTIANSØ HARBOUR	28
N MELSTED HARBOUR	30
O LISTED HARBOUR	32
P SVANEKE HARBOUR	34
Q AARSDALE HARBOUR	36
R NEXØ HARBOUR	38
S SNOGEBÆK HARBOUR	40
T BAKKERNE HARBOUR	42
U BODERNE HARBOUR	44
V ARNAGER HARBOUR	46



> This is an informative guide and must NOT be used as an alternative to nautical charts or harbour pilots. Nautical chart: 180, 181, 188 and 189 depict the reliable routes to a mariner's paradise.



Hammerhavn Harbour was rebuilt in 2012 with handsome granite casings and new amenities as part of a total investment of more than DKK 25 million.

Visiting yachters are welcome in the entire outer harbour basin and at vacant berths in the inner basin.



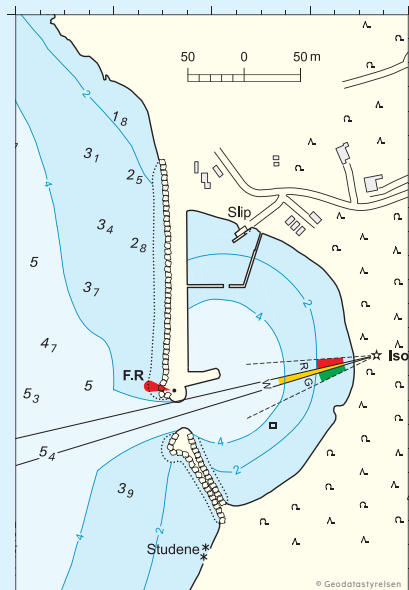
The harbour's amenities comprise the popular café and multi-purpose building where you can eat a packed lunch and read the history of the era when the area's granite industry employed a workforce of more than 300. Hammerhavn Harbour nestles in a magnificent landscape at the foot of the biggest castle ruin in northern Europe: Hammershus.

The harbour is an ideal base for unique scenic rambles in both Slotslyngen and Hammerknuden or for Hammerhus's new visitor's centre inspired by world-renowned Danish architect Jørn Utzon.

The highlight of a boat trip on the harbour's sightseeing boats is entering one of the 70-metre deep caves carved into the bird cliffs. Enjoy the harbour's nightingale's song at sunset and bathe at the harbour's own sandy beach; catch your own fish for dinner from either the pier or the local trolling/jigging boat.

The harbour is a splendid base for unique skin-diving experiences, such as diving deep into the caves of Hammerknuden or exploring the biggest shipwrecks in northern Europe.

The harbour is the point of departure for a range of outdoor activities: the Stone Quarry Museum, the Hammer nature area with the Hammer Odde Lighthouse, Jons Kapel rock formation, the Wonderfestiwall music festival, Hammersøen Lake and the longest aerial ropeway in Denmark where a 290-metre ride down the ropeway ends with a dip in Opalsøen Lake.



EXCURSIONS



Opalsøen / Lake	0,5 km	Hammershus Castle Ruin	2 km	"Den tørre oven"
Hammersøen / Lake	0,5 km	Hammer Odde Lighthouse	1 km	
Slotslyngen	2 km	Wonderfestiwall / Music		

Harbour

Phone

HARBOUR OVERVIEW

A RØNNE HARBOUR	2
B RØNNE MARINA/NØRREKAAS	4
C HASLE HARBOUR	6
D HELLIGPEDER HARBOUR	8
E TEGLKAAS HARBOUR	10
F VANG HARBOUR	12
G HAMMERHAVN HARBOUR	14
H SANDVIG HARBOUR	16
I ALLINGE HARBOUR	18
J TEJN HARBOUR	20
K GUDHJEM'S WEST HARBOUR/NØRRESAND	22
L GUDHJEM'S EAST HARBOUR	26
M CHRISTIANSØ HARBOUR	28
N MELSTED HARBOUR	30
O LISTED HARBOUR	32
P SVANEKE HARBOUR	34
Q AARSDALE HARBOUR	36
R NEXØ HARBOUR	38
S SNOGEBÆK HARBOUR	40
T BAKKERNE HARBOUR	42
U BODERNE HARBOUR	44
V ARNAGER HARBOUR	46



> This is an informative guide and must NOT be used as an alternative to nautical charts or harbour pilots. Nautical chart: 180, 181, 188 and 189 depict the reliable routes to a mariner's paradise.



Sandvig Harbour is a cosy little port heavily supported by the locals with plenty of space for visiting yachters and rarely filled up, except during the one-week National Political Festival in June.

The users have come far in efforts to establish a new sauna at the end of the pier, which is also the harbour's bathing site.



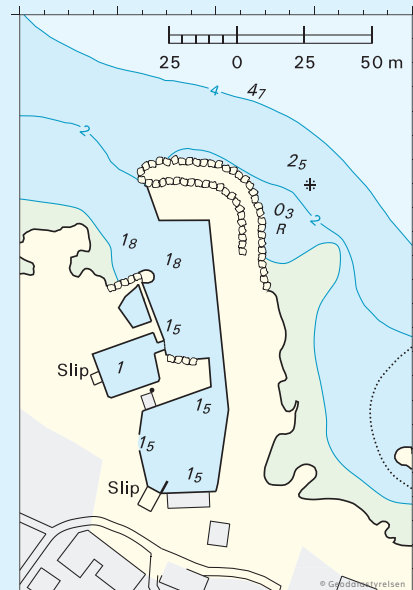
The harbour's day room with kitchenette has magnificent views of the boats and the Baltic. The entire outer dock is reserved for visiting yachters, but it is also possible to use vacant berths at the inner dock.

The harbour is situated close to one of north Bornholm's best sandy beaches in an interesting village environment with good eateries right down on the quay. The town square has live music every week in peak season.

The National Political Festival, situated a few hundred metres from the harbour, has also left its mark on Sandvig in the form of new restaurants and bars, also serving high-quality gourmet food.

Crazy golf and bicycle rental are close to the harbour, and the beach promenade features a local market.

An ice-cream café near the harbour – serving innovative ice cream combinations, coffee and pastries of high quality – was once an ice house used by the fishing industry to store ice carved out of Hammersøen Lake in winter. The ice was then used to chill locally caught fish during the summer. Sandvig is perfect for those seeking a village milieu, superb bathing opportunities combined with tranquillity and nature hikes to Hammerknuden, Hammer Odde Lighthouse, Langebjerg, etc.


EXCURSIONS


Hammer Odde Lighthouse 2 km

Hammerknuden 1 km

Salomons Chapel 2 km

Langebjerg 1 km

Thursday market



800 m



Phone



HARBOUR OVERVIEW

A RØNNE HARBOUR	2
B RØNNE MARINA/NØRREKAAS	4
C HASLE HARBOUR	6
D HELLIGPEDER HARBOUR	8
E TEGLKAAS HARBOUR	10
F VANG HARBOUR	12
G HAMMERHAVN HARBOUR	14
H SANDVIG HARBOUR	16
I ALLINGE HARBOUR	18
J TEJN HARBOUR	20
K GUDHJEM'S WEST HARBOUR/NØRRESAND	22
L GUDHJEM'S EAST HARBOUR	26
M CHRISTIANSØ HARBOUR	28
N MELSTED HARBOUR	30
O LISTED HARBOUR	32
P SVANEKE HARBOUR	34
Q AARSDALE HARBOUR	36
R NEXØ HARBOUR	38
S SNOGEBÆK HARBOUR	40
T BAKKERNE HARBOUR	42
U BODERNE HARBOUR	44
V ARNAGER HARBOUR	46



> This is an informative guide and must NOT be used as an alternative to nautical charts or harbour pilots. Nautical chart: 180, 181, 188 and 189 depict the reliable routes to a mariner's paradise.

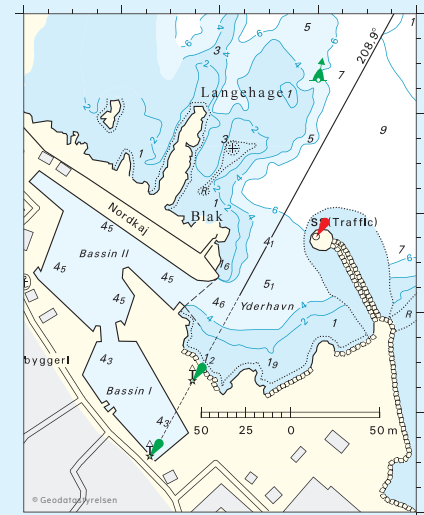


Allinge Harbour is an authentic Bornholm port, blasted to accommodate deep-draught vessels, as it has also served as a car-ferry port with regular service to Sweden. The former ticket office for the ferry route to Simrishamn on the quay now houses the tourist office.

The blasted granite boulders were used to make the solid harbour works protecting against up to seven-metre-high waves formed along the open stretch of the Baltic across the 600 kilometres to the Gulf of Finland. Another jetty was added to the harbour to provide further protection in 2006. Even so, the inner dock is occasionally shut off from the outer dock in strong onshore winds. Today, the harbour is so popular, even if it is only used by visiting yach-

ters, that in the peak season it can be necessary to raise the black signal spheres/three red lights signalling that every space is sold out. Visiting yachters are welcome throughout the harbour, which only has a few local boats that don't mind too much about being blocked in by visiting yachters in the peak season.

Madsebakke rock carvings can be experienced next to the new nature path connecting Allinge to Hammershus. On the way, you will pass the Habbe Dam reservoir, where the sluice distributes water between the watermill in Allinge and the watermill at Hammershus. In addition to this, Allinge Harbour has truly become nationally famous by virtue of Denmark's large National Political Festival attended by 100,000 people in 2017. The port is situated at the centre of the town and surrounded by an interesting urban environment of fine shops and restaurants right on the quay, a boiled sweets workshop/shop, craft art and a complete array of seafood. In peak season nationally renowned names perform daily on the stage of Gæsten, a unique open-air music venue 100 metres from the waterfront, and in the third week of July, the harbour and waterfront are brimming with jazz.



EXCURSIONS



Allinge Smokehouse

Petroglyphs

1 km

Olsker Round church

5 km

Allinge Church

Moseløkken Stone Quarry

2 km



800 m



HARBOUR OVERVIEW

A RØNNE HARBOUR	2
B RØNNE MARINA/NØRREKAAS	4
C HASLE HARBOUR	6
D HELLIGPEDER HARBOUR	8
E TEGLKAAS HARBOUR	10
F VANG HARBOUR	12
G HAMMERHAVN HARBOUR	14
H SANDVIG HARBOUR	16
I ALLINGE HARBOUR	18
J TEJN HARBOUR	20
K GUDHJEM'S WEST HARBOUR/NØRRESAND	22
L GUDHJEM'S EAST HARBOUR	26
M CHRISTIANSØ HARBOUR	28
N MELSTED HARBOUR	30
O LISTED HARBOUR	32
P SVANEKE HARBOUR	34
Q AARSDALE HARBOUR	36
R NEXØ HARBOUR	38
S SNOGEBÆK HARBOUR	40
T BAKKERNE HARBOUR	42
U BODERNE HARBOUR	44
V ARNAGER HARBOUR	46



> This is an informative guide and must NOT be used as an alternative to nautical charts or harbour pilots. Nautical chart: 180, 181, 188 and 189 depict the reliable routes to a mariner's paradise.

TEJN HARBOUR



Tejn harbour is one of the sunshine island's major harbours with an interesting blend of commercial and recreational activities.

The port is visited every year by some 4,500 trolling boats for Trollingmaster Bornholm, a four-day competition to catch the biggest salmon. Apart from the trolling competition, the port has plenty of space for visiting yachters, who are welcome in all basins.



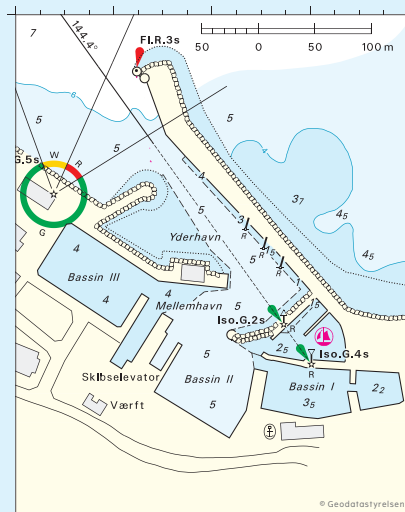
The port has a large slipway, shipyard, ship engine and electrical workshop, sail-maker's, boating-equipment shop, and the island's only diesel and petrol station with card payment, right on the quay.

The port has almost everything on offer that a visiting yachter might need: a supermarket, speciality shops and eateries. Tejn even has its very own microbrewery, Penyllan, which also makes a natural craft beer and offers guided tours to enrich your knowledge of the art of brewing.

This is also where the first sod has been turned for a large archaeological centre to be housed in former fishery industry buildings on the waterfront. There are good places to bathe in the Baltic along the waterfront, supplemented, if you prefer, by an outdoor hot tub or a wood-fired sauna.

It is possible to barbecue your dinner at one of the port's barbecue grills, while enjoying the lovely views of the rocky coastline. The Port of Tejn is the closest harbour to the Bornholm Art Museum, the gourmet restaurant Stammershalle Badehotel and the famous Rø Golf Course whose fairways transect the rocky Bornholm landscape.

To the north, one of the island's loveliest paths winds its way along the rocky coast to Allinge, about five kilometres away.



EXCURSIONS



Helligdomsklipperne / Cliffs	6 km	Døndale Waterfall	5 km	Bornholms Kunstmuseum	6 km
Storedal / Valley	2 km	Stammershalle	3 km		
Golf Course	5 km	"Sorte Gryde"	6 km		



HARBOUR OVERVIEW

A RØNNE HARBOUR	2
B RØNNE MARINA/NØRREKAAS	4
C HASLE HARBOUR	6
D HELLIGPEDER HARBOUR	8
E TEGLKAAS HARBOUR	10
F VANG HARBOUR	12
G HAMMERHAVN HARBOUR	14
H SANDVIG HARBOUR	16
I ALLINGE HARBOUR	18
J TEJN HARBOUR	20
K GUDHJEM'S WEST HARBOUR/NØRRESAND	22
L GUDHJEM'S EAST HARBOUR	26
M CHRISTIANSØ HARBOUR	28
N MELSTED HARBOUR	30
O LISTED HARBOUR	32
P SVANEKE HARBOUR	34
Q AARSDALE HARBOUR	36
R NEXØ HARBOUR	38
S SNOGEBÆK HARBOUR	40
T BAKKERNE HARBOUR	42
U BODERNE HARBOUR	44
V ARNAGER HARBOUR	46



> This is an informative guide and must NOT be used as an alternative to nautical charts or harbour pilots. Nautical chart: 180, 181, 188 and 189 depict the reliable routes to a mariner's paradise.



The two harbours of Gudhjem were built for freight and passenger traffic more than a century ago.

Two harbours were needed to make it possible to access the village no matter which direction the wind is blowing.

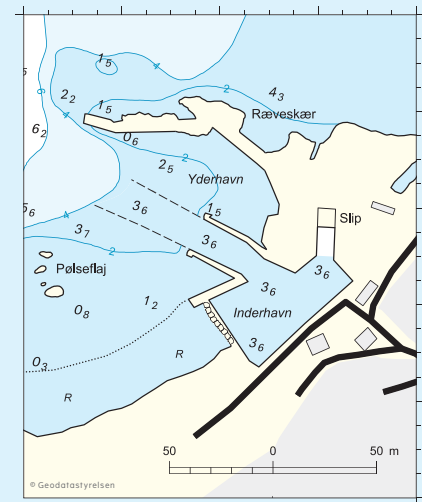
Nørresan harbour, situated in the west part of Gudhjem, has plenty of space for visitors and it is a splendid supplement to the main harbour when easterly winds reduce the main harbour's capacity.

Nørresan is the home port for Gudhjem locals, and a favourite bathing site for many is among the rocks and skerries west of the harbour.

The outdoor activity company Kystklar started to offer thrilling rubber-boat safaris to Helligdomsklipperne cliffs in 2017. A new café opened in the harbour's former smokehouse in 2016.

The Oluf Høst Museum, with its permanent exhibition of the island's most renowned painter, is situated near the harbour. In addition, exploring the village is an experience all its own up and down the secluded stair-stepped paths, brimming with Mediterranean atmosphere, and along the old rescue paths east of the harbour towards Melsted and west of the harbour towards Helligdomsklipperne cliffs.

"Sun Above Gudhjem" is the name of both a big chefs' competition held in Gudhjem every year and a dish: smoked herring on a slice of rye bread, with onions, egg and radishes (perhaps named after the fact that it is possible to see the sun rise up from and set on the sea in Gudhjem around Midsummer's Eve).



EXCURSIONS



500 m



The Oluf Høst Museum

Scala cinema 0,4 km
Indoor Swimming Pool 1 km

Medieval Center

Gudhjem Museum 0,7 km
Rubber-boat safari

5 km

Glasswork

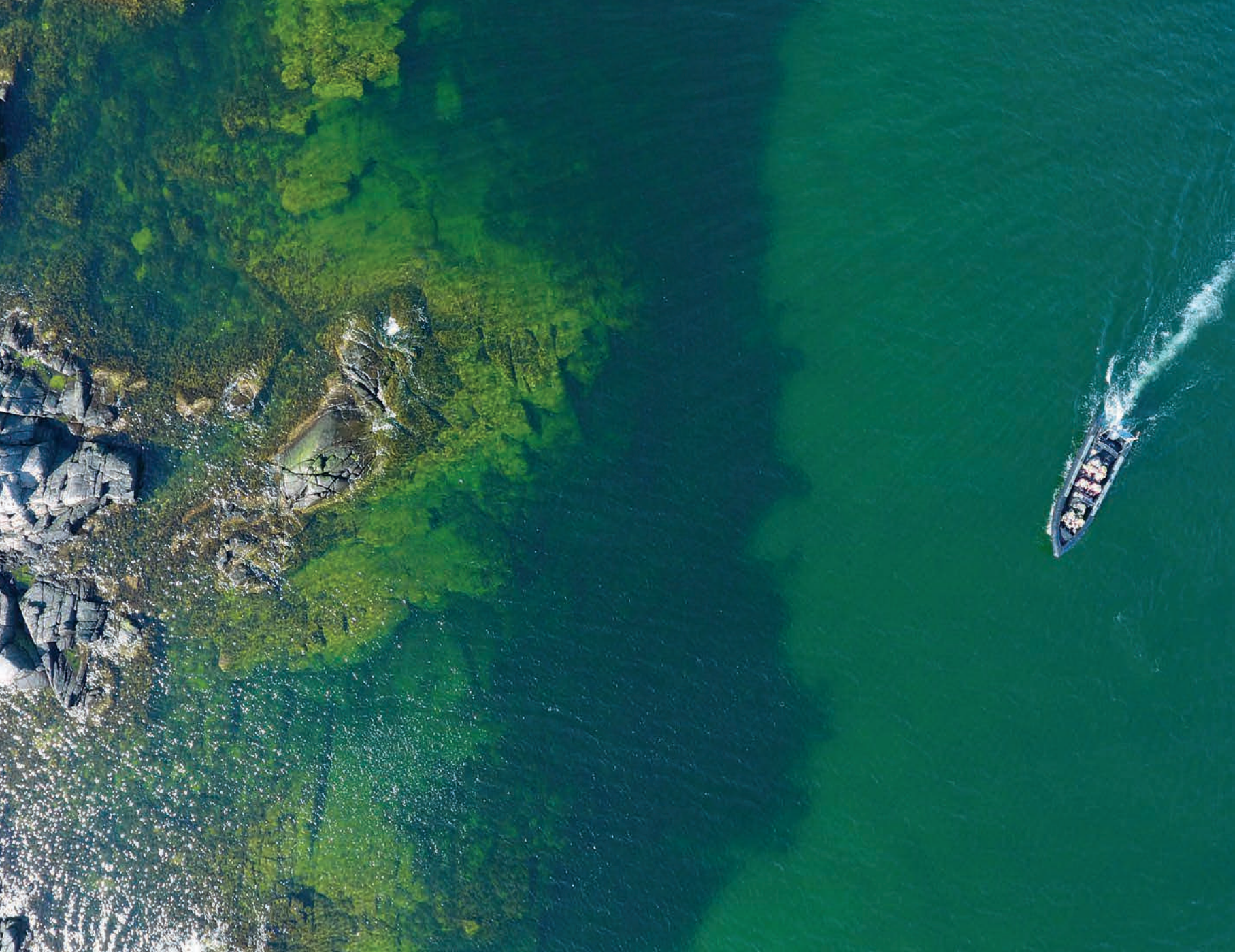
0,2 km

HARBOUR OVERVIEW

A RØNNE HARBOUR	2
B RØNNE MARINA/NØRREKAAS	4
C HASLE HARBOUR	6
D HELLIGPEDER HARBOUR	8
E TEGLKAAS HARBOUR	10
F VANG HARBOUR	12
G HAMMERHAVN HARBOUR	14
H SANDVIG HARBOUR	16
I ALLINGE HARBOUR	18
J TEJN HARBOUR	20
K GUDHJEM'S WEST HARBOUR/NØRRESAND	22
L GUDHJEM'S EAST HARBOUR	26
M CHRISTIANSØ HARBOUR	28
N MELSTED HARBOUR	30
O LISTED HARBOUR	32
P SVANEKE HARBOUR	34
Q AARSDALE HARBOUR	36
R NEXØ HARBOUR	38
S SNOGEBÆK HARBOUR	40
T BAKKERNE HARBOUR	42
U BODERNE HARBOUR	44
V ARNAGER HARBOUR	46



> This is an informative guide and must NOT be used as an alternative to nautical charts or harbour pilots. Nautical chart: 180, 181, 188 and 189 depict the reliable routes to a mariner's paradise.



HARBOUR OVERVIEW

A RØNNE HARBOUR	2
B RØNNE MARINA/NØRREKAAS	4
C HASLE HARBOUR	6
D HELLIGPEDER HARBOUR	8
E TEGLKAAS HARBOUR	10
F VANG HARBOUR	12
G HAMMERHAVN HARBOUR	14
H SANDVIG HARBOUR	16
I ALLINGE HARBOUR	18
J TEJN HARBOUR	20
K GUDHJEM'S WEST HARBOUR/NØRRESAND	22
L GUDHJEM'S EAST HARBOUR	26
M CHRISTIANSØ HARBOUR	28
N MELSTED HARBOUR	30
O LISTED HARBOUR	32
P SVANEKE HARBOUR	34
Q AARSDALE HARBOUR	36
R NEXØ HARBOUR	38
S SNOGEBÆK HARBOUR	40
T BAKKERNE HARBOUR	42
U BODERNE HARBOUR	44
V ARNAGER HARBOUR	46



> This is an informative guide and must NOT be used as an alternative to nautical charts or harbour pilots. Nautical chart: 180, 181, 188 and 189 depict the reliable routes to a mariner's paradise.



Gudhjem's main harbour is of the authentic Bornholm variety: blasted out of the granite horst jutting up from the coast towards Bokuld and giving the harbour and village an unusual Mediterranean atmosphere.

In the eastern harbour, visiting yachters are welcome in all basins, but two quays are reserved for the Christiansø ferry service – providing several daily trips to Christiansø Island – and the tour boat Thor – providing guided tours to the Helligdomsklipper cliffs and the Bornholm Art Museum.



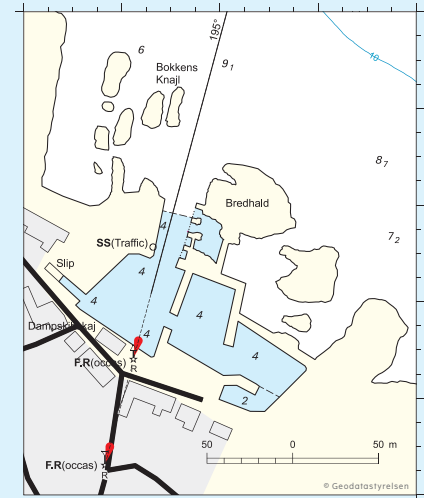
There is usually space for everyone, but capacity is reduced in onshore winds when the old oak harbour gate separating the inner and outer docks is closed.

The waterfront has new bathing and toilet facilities, as well as a laundry reserved for visiting yachters.

The town's tourist information office has relocated to the quay and is pleased to assist visiting yachters with information about all the offerings in the village, including the well-appointed shopping area, interesting cafés and restaurants as well as craft art.

At 10 am the atmosphere is heightened as some of Denmark's most renowned songs are sung on the waterfront as the first ferry departs for Christiansø Island.

The rock formations around the harbour are frequently used to enjoy everything from smoked herring from the waterfront smokehouse, to sunbathing or a dip in the deep blue Baltic Sea at sunset.



EXCURSIONS



Østerlars Round church 6 km



Sightseeing boats



Gudhjem Mill 0,3 km

The Oluf Høst Museum 0,5 km
Gudhjem Museum 0,7 km

Indoor Swimming Pool 1 km
Medieval Center 5 km

Ferry to Christiansø Island
Scala cinema



500 m



HARBOUR OVERVIEW

A RØNNE HARBOUR	2
B RØNNE MARINA/NØRREKAAS	4
C HASLE HARBOUR	6
D HELLIGPEDER HARBOUR	8
E TEGLKAAS HARBOUR	10
F VANG HARBOUR	12
G HAMMERHAVN HARBOUR	14
H SANDVIG HARBOUR	16
I ALLINGE HARBOUR	18
J TEJN HARBOUR	20
K GUDHJEM'S WEST HARBOUR/NØRRESAND	22
L GUDHJEM'S EAST HARBOUR	26
M CHRISTIANSØ HARBOUR	28
N MELSTED HARBOUR	30
O LISTED HARBOUR	32
P SVANEKE HARBOUR	34
Q AARSDALE HARBOUR	36
R NEXØ HARBOUR	38
S SNOGEBÆK HARBOUR	40
T BAKKERNE HARBOUR	42
U BODERNE HARBOUR	44
V ARNAGER HARBOUR	46



> This is an informative guide and must NOT be used as an alternative to nautical charts or harbour pilots. Nautical chart: 180, 181, 188 and 189 depict the reliable routes to a mariner's paradise.

CHRISTIANSØ HARBOUR



Christiansø Harbour has two approaches, one on either side of the swing bridge connecting the two main islands and separating the harbour basin into a south harbour and a north harbour.

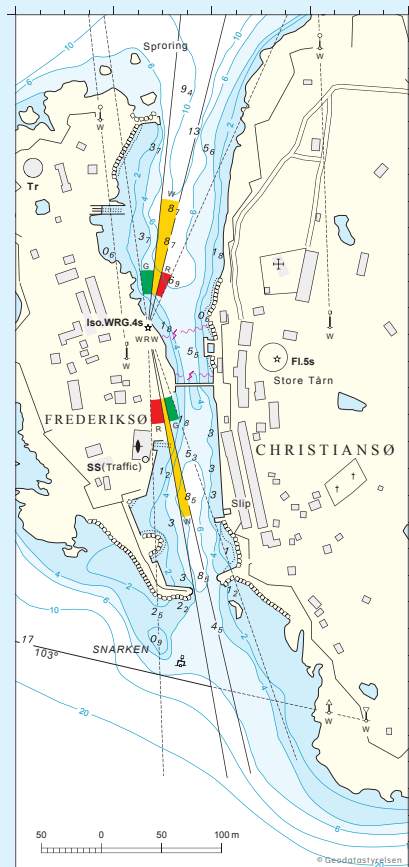
Visiting yachters are welcome in both, which makes it possible to approach the islands in any wind direction. A visit to the islands in your own boat is an unforgettable experience. Someone must have had yachters in mind when this fantastic natural harbour was created between the two islands surrounded by 100-metre-deep waters, ten nautical miles from Bornholm – reminiscent of "Utklippan", located ten nautical miles from Karlskrona, Sweden.

Christiansø Island has 100 year-round inhabitants. It is a small community with an inn, church, police station, school, grocery shop with bakery, post office, museum, gallery, community centre, campsite and a shop where the renowned Christiansø marinated herring are sold on the island.

The community's unique quality is exemplified by a local story of a woman who once lived a long life on Christiansø island without ever setting foot on Frederiksø island, "Because what would I do over there?" she asked.

The islands are self-sufficient with electricity and previously also with drinking water, which for centuries was provided by collecting rainwater in open wells. Everything on both islands is housed in listed buildings, as the islands previously formed a large fortification.

The archipelago is home to the Græsholmen bird sanctuary where Baltic "penguins" live. In recent years, the population of 300-kilo grey seals living around the islands has grown to such an extent that two seals fall off into the water whenever a newly arrived seal pushes itself up onto the skerry Tatt.



EXCURSIONS



The big tower



Stepped path on Christiansø Island



The little tower

0,5 km

- Harbour
-
-
-
-
-
-
-

HARBOUR OVERVIEW

A RØNNE HARBOUR	2
B RØNNE MARINA/NØRREKAAS	4
C HASLE HARBOUR	6
D HELLIGPEDER HARBOUR	8
E TEGLKAAS HARBOUR	10
F VANG HARBOUR	12
G HAMMERHAVN HARBOUR	14
H SANDVIG HARBOUR	16
I ALLINGE HARBOUR	18
J TEJN HARBOUR	20
K GUDHJEM'S WEST HARBOUR/NØRRESAND	22
L GUDHJEM'S EAST HARBOUR	26
M CHRISTIANSØ HARBOUR	28
N MELSTED HARBOUR	30
O LISTED HARBOUR	32
P SVANEKE HARBOUR	34
Q AARSDALE HARBOUR	36
R NEXØ HARBOUR	38
S SNOGEBÆK HARBOUR	40
T BAKKERNE HARBOUR	42
U BODERNE HARBOUR	44
V ARNAGER HARBOUR	46



> This is an informative guide and must NOT be used as an alternative to nautical charts or harbour pilots. Nautical chart: 180, 181, 188 and 189 depict the reliable routes to a mariner's paradise.

MELSTED HARBOUR



Melsted Harbour is a small private harbour well protected between two skerries – Sorteskær and Guleskær.

The port was built out of granite in 1884 and is now the home port for around 50 local pleasure craft and skiffs, but also welcomes small visiting yachts.



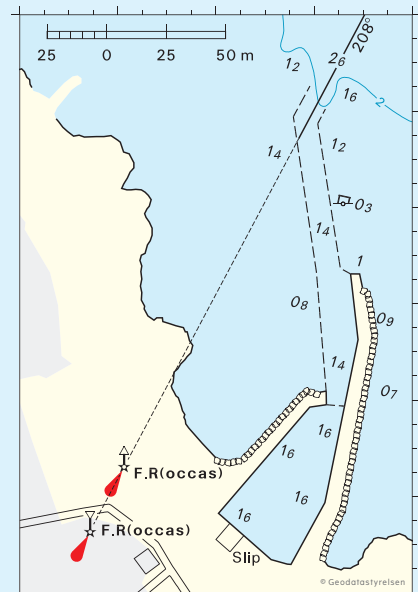
Coastal ramparts are located both to the north and south of the harbour. These formed part of Bornholm's fortifications about seven centuries years ago.

Melsted is a small cosy fishing hamlet with small well-kept half-timbered houses and narrow winding streets. Four of the houses still have their original smokehouse chimneys, attesting to the herring smoking of days gone by.

East of the harbour, the attractive sandy beach lies at the foot of a prominent old seaside hotel that is still in operation and houses a gourmet restaurant. The Melstedgaard Agricultural Museum – a 300-year-old Bornholm half-timbered farmstead with thatched roof – is situated along the highway about 300 metres from the harbour.

Here it is possible to experience how farming was done in days of old. The buildings at the site also house Bornholm's new Centre for Culinary Heritage, situated in both the "Skaferiet" shop in the farm's courtyard building and in a newly constructed building named "gaarden" (the farm), east of the farmstead itself.

Here it is possible to attend cookery classes and learn to concoct local dishes, as well as buy almost the entire selection of Bornholm's renowned regional specialities.



EXCURSIONS



Melstedgaard / Museum 0,3 km Baltic Sea Glass 3 km Stavehøl Waterfall 4 km

Harbour

500 m

Phone

HARBOUR OVERVIEW

A RØNNE HARBOUR	2
B RØNNE MARINA/NØRREKAAS	4
C HASLE HARBOUR	6
D HELLIGPEDER HARBOUR	8
E TEGLKAAS HARBOUR	10
F VANG HARBOUR	12
G HAMMERHAVN HARBOUR	14
H SANDVIG HARBOUR	16
I ALLINGE HARBOUR	18
J TEJN HARBOUR	20
K GUDHJEM'S WEST HARBOUR/NØRRESAND	22
L GUDHJEM'S EAST HARBOUR	26
M CHRISTIANSØ HARBOUR	28
N MELSTED HARBOUR	30
O LISTED HARBOUR	32
P SVANEKE HARBOUR	34
Q AARSDALE HARBOUR	36
R NEXØ HARBOUR	38
S SNOGEBÆK HARBOUR	40
T BAKKERNE HARBOUR	42
U BODERNE HARBOUR	44
V ARNAGER HARBOUR	46



> This is an informative guide and must NOT be used as an alternative to nautical charts or harbour pilots. Nautical chart: 180, 181, 188 and 189 depict the reliable routes to a mariner's paradise.



Listed Harbour is a cosy granite port with one active commercial fisherman and plenty of space for visiting yachters, who are welcome in all basins.

The harbour is well-protected in all wind directions and at the height of summer affords sunsets of unrivalled beauty.

They can be enjoyed with a delicious cocktail from the waterfront's café and cocktail bar. But the small port also provides peace and calm and magnificent rambles, not least to Randkløve Cleft, situated almost four kilometres north of the harbour.

The ramble passes through Bølshavn, Denmark's smallest functioning commercial harbour with only one commercial fisherman (who has been issued with a special dinghy quota).

It also passes by secluded Harald's Harbour, which served as a secret point of departure for Jews fleeing the island during World War II.

The small cosy fishing hamlet also features a small fishery museum, a ceramist's shop, a craft art shop, and its own trolling centre with jig boats and guided angling tours.

The secluded bathing beach of the locals named Høl lies in a bay at the end of a 100-metre-wide rocky cleft about 300 metres north of the harbour.

Vasebæk stream flows into the sea 300 metres east of the harbour. Following the waterway inland, you pass a small granite waterworks building, designed by world-renowned Danish architect Jørn Utzon. Bornholm's newly refurbished amusement and experience park Brændesgårdshaven is about two kilometres from Listed.



EXCURSIONS



Harald's Harbour

Brændesgårdshaven

2 km

"Randkløve Skår"

5 km



HARBOUR OVERVIEW

A RØNNE HARBOUR	2
B RØNNE MARINA/NØRREKAAS	4
C HASLE HARBOUR	6
D HELLIGPEDER HARBOUR	8
E TEGLKAAS HARBOUR	10
F VANG HARBOUR	12
G HAMMERHAVN HARBOUR	14
H SANDVIG HARBOUR	16
I ALLINGE HARBOUR	18
J TEJN HARBOUR	20
K GUDHJEM'S WEST HARBOUR/NØRRESAND	22
L GUDHJEM'S EAST HARBOUR	26
M CHRISTIANSØ HARBOUR	28
N MELSTED HARBOUR	30
O LISTED HARBOUR	32
P SVANEKE HARBOUR	34
Q AARSDALE HARBOUR	36
R NEXØ HARBOUR	38
S SNOGEBÆK HARBOUR	40
T BAKKERNE HARBOUR	42
U BODERNE HARBOUR	44
V ARNAGER HARBOUR	46



> This is an informative guide and must NOT be used as an alternative to nautical charts or harbour pilots. Nautical chart: 180, 181, 188 and 189 depict the reliable routes to a mariner's paradise.



Svaneke Harbour was blasted out of the rock at this town of sunshine and continues to support an active commercial fishery. Visiting yachters are welcome throughout the harbour to which a new jetty was added in 2011, thereby increasing its capacity, also in onshore winds. At the same time, the harbour got a splendid new bathing area with a 1-2-3-metre diving platform.

A stay in Svaneke can be supplemented with a trip to the local skerries where you moor your boat among the rocks. Once "the red wine and grill" have been carried ashore, you can experience the tranquillity, despite the fact that you can walk around the entire town in less than one hour.

The town's tourist information office is at the harbour office. It will provide you with enough inspiration for many years of return visits, and a common room on the first floor provides a magnificent view of the Baltic Sea and the harbour. Next to the waterfront is the barque "Svanen" whose length of 180 feet made it the biggest wooden ship ever built on Bornholm. Svanen is now standing 100 metres from where it was built 150 years ago.

Svaneke has been lauded as Denmark's loveliest market town, and you can experience the production of countless local foods: boiled sweets, caramels, liquorice, ice cream, chocolate, wine gums, cider, soft drinks, pasta, pesto and – not least – the world-famous Svaneke Beer.

The town has splendid restaurants and cafés, a wide variety of seafood – both direct from a fishing boat and at the island's biggest smokehouse – a well-appointed shopping district, a cinema, galleries, large puppet theatre, active craft artists, as well as interesting landmarks, such as the combined beacon and water tower designed by Danish architect Jørn Utzon.



EXCURSIONS



- Utzon's Water Tower
- Svaneke Brewery
- 0,2 km
- Svaneke Lighthouse
- Brændesgårdshaven
- 4 km
- Svaneke Stub Mill
- 5 km
- Fresh fish right from the sea

Harbour

200 m



Phone

HARBOUR OVERVIEW

A RØNNE HARBOUR	2
B RØNNE MARINA/NØRREKAAS	4
C HASLE HARBOUR	6
D HELLIGPEDER HARBOUR	8
E TEGLKAAS HARBOUR	10
F VANG HARBOUR	12
G HAMMERHAVN HARBOUR	14
H SANDVIG HARBOUR	16
I ALLINGE HARBOUR	18
J TEJN HARBOUR	20
K GUDHJEM'S WEST HARBOUR/NØRRESAND	22
L GUDHJEM'S EAST HARBOUR	26
M CHRISTIANSØ HARBOUR	28
N MELSTED HARBOUR	30
O LISTED HARBOUR	32
P SVANEKE HARBOUR	34
Q AARSDALE HARBOUR	36
R NEXØ HARBOUR	38
S SNOGEBÆK HARBOUR	40
T BAKKERNE HARBOUR	42
U BODERNE HARBOUR	44
V ARNAGER HARBOUR	46



> This is an informative guide and must NOT be used as an alternative to nautical charts or harbour pilots. Nautical chart: 180, 181, 188 and 189 depict the reliable routes to a mariner's paradise.

AARSDALE HARBOUR



Aarsdale Harbour is an active fishing hamlet situated along the east coast of Bornholm, two nautical miles south of Svaneke.

The harbour was founded in 1869. Here, too, the harbour has shaped the village, which is renowned for its many smokehouses.

Aarsdale was once one of the island's biggest fishery communities with more than 30 fishing vessels. Aarsdale has its own meeting place and grocery shop – "Høkeren" – right on the waterfront where visiting yachters can meet the locals and stock up on provisions.

The harbour's striking commercial fishery building, which no longer processes fish, is being rebuilt. In the near future, it will be possible to savour interesting craft beers here.

The fishing hamlet features an active smokehouse and fishmonger's close to the waterfront where it is possible to buy a complete selection of seafood.

The harbour still has its own boat builder. One of the best-preserved smock mills in Denmark towers over the harbour.

The mill is the hamlet's landmark and was built in 1877. It still uses wind power to grind a wide variety of flours from Bornholm grains. The milling process can be experienced by visiting the mill, where visitors can also experience Bornholm granite being made into jewellery.

Over the years, the hamlet's tranquillity has made Aarsdale a home for artists and craft artists.



EXCURSIONS



Aarsdale Mill	0,5 km	Granite grindery	0,5 km	Paradisbakkerne / Hills	6 km
Langeskanse	2 km				



HARBOUR OVERVIEW

A RØNNE HARBOUR	2
B RØNNE MARINA/NØRREKAAS	4
C HASLE HARBOUR	6
D HELLIGPEDER HARBOUR	8
E TEGLKAAS HARBOUR	10
F VANG HARBOUR	12
G HAMMERHAVN HARBOUR	14
H SANDVIG HARBOUR	16
I ALLINGE HARBOUR	18
J TEJN HARBOUR	20
K GUDHJEM'S WEST HARBOUR/NØRRESAND	22
L GUDHJEM'S EAST HARBOUR	26
M CHRISTIANSØ HARBOUR	28
N MELSTED HARBOUR	30
O LISTED HARBOUR	32
P SVANEKE HARBOUR	34
Q AARSDALE HARBOUR	36
R NEXØ HARBOUR	38
S SNOGEBÆK HARBOUR	40
T BAKKERNE HARBOUR	42
U BODERNE HARBOUR	44
V ARNAGER HARBOUR	46



> This is an informative guide and must NOT be used as an alternative to nautical charts or harbour pilots. Nautical chart: 180, 181, 188 and 189 depict the reliable routes to a mariner's paradise.



Nexø Harbour is the biggest fishery harbour on Bornholm and is located right in the centre of Nexø. All types of Baltic fish are landed here – from sprat to big wild salmon.

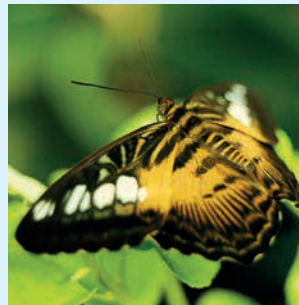
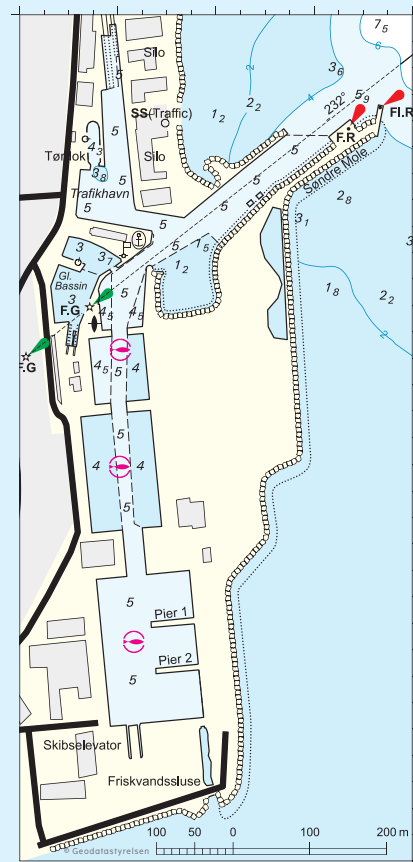
The port still has a large shipyard and service companies providing all types of repairs, as well as a boating-equipment shop. Visiting yachters are welcome along the 2870 metres of quayside, which provides plenty of space for visiting pleasure craft of all sizes. The three northernmost harbour basins, along with the old dry dock, comprise the only major port in Denmark built of sandstone, which is the bedrock from which the harbour was blasted. In summer, there is a daily passenger-ferry service to Poland.

Nexø is the second-largest town on Bornholm and features a wide selection of grocery and speciality shops, an active herring smoke-house, cafés and restaurants.

The town also has a museum of cultural history, as well as the memorial rooms of author Martin Andersen Nexø. A week of jazz is held every summer.

Nexø also features interesting localities, such as the Glass and Ceramics Workshop Bornholm, the Butterfly Park, and a sculpture park on the way to Stenbrudssøen (quarry lake), stocked with fish for freshwater angling.

Just north of the quarry, it is possible to straddle 1.1 billion years of history across the Fenno-Scandic fault line: with the sandstone bedrock of southern Europe under one foot and the granite bedrock of northern Europe under the other.



EXCURSIONS

Butterfly Park	1 km	Martin Andersen Nexø	0,5 km	Balka	4 km
Nexø Museum	0,5 km	Stenbrudssøen / Lake	1 km	Ferry to Kołobrzeg, Poland	
Halleklipperne / Cliffs	3 km	Golf Course	10 km		



0,2-2 km



HARBOUR OVERVIEW

A RØNNE HARBOUR	2
B RØNNE MARINA/NØRREKAAS	4
C HASLE HARBOUR	6
D HELLIGPEDER HARBOUR	8
E TEGLKAAS HARBOUR	10
F VANG HARBOUR	12
G HAMMERHAVN HARBOUR	14
H SANDVIG HARBOUR	16
I ALLINGE HARBOUR	18
J TEJN HARBOUR	20
K GUDHJEM'S WEST HARBOUR/NØRRESAND	22
L GUDHJEM'S EAST HARBOUR	26
M CHRISTIANSØ HARBOUR	28
N MELSTED HARBOUR	30
O LISTED HARBOUR	32
P SVANEKE HARBOUR	34
Q AARSDALE HARBOUR	36
R NEXØ HARBOUR	38
S SNOGEBÆK HARBOUR	40
T BAKKERNE HARBOUR	42
U BODERNE HARBOUR	44
V ARNAGER HARBOUR	46



> This is an informative guide and must NOT be used as an alternative to nautical charts or harbour pilots. Nautical chart: 180, 181, 188 and 189 depict the reliable routes to a mariner's paradise.



Snøgebæk is the easternmost port on south Bornholm, from where the miles of silvery sandy beaches stretch from Nexø to Rønne.

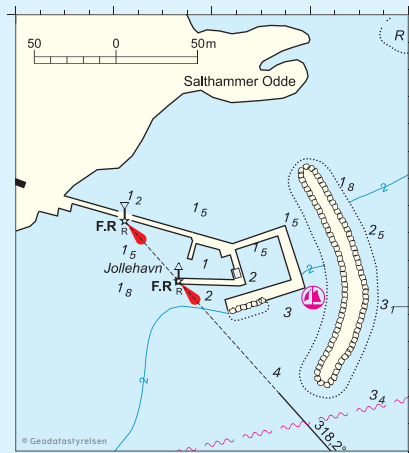
Snøgebæk Harbour is actually situated offshore to prevent it sanding up – a typical problem of south Bornholm harbours. The harbour is well-protected by its two reefs – Salthammerrev and Brorev – where only the harbour’s approach direction provides safe and easy access to the harbour.

Visiting yachters are welcome at the visitor berths behind the harbour’s jetty and in the harbour proper. The harbour’s big smokehouse tells the story of the active commercial fishery that was once based in Snøgebæk.

Snøgebæk has developed into a big meeting place for tourists from all over south Bornholm. The fishing hamlet is bustling with life, with a variety of speciality shops in addition to the town’s supermarket.

Production of the now world-renowned chocolate began in Snøgebæk, which also features an ice cream shop serving ice cream made from local ingredients. The village is also home to craft artists: demonstration workshops let visitors experience the working processes and buy a memento to take back home.

The village features a wide selection of outdoor experiences. It is possible to rent a wide range of equipment, receive training and take part in guided tours. The village is famous for its annual harbour fête which has maintained a 1970s atmosphere – the only harbour fête on the island to do so. Here, local associations serve the Bornholm speciality Grilled Herring, and a local procession of imaginative vessels compete to see who can be the fastest and win the thrilling ”Daredevils of the Slipway” competition.



EXCURSIONS



Dueodde Beach

5 km

Golf Course

10 km



Harbour

HARBOUR OVERVIEW

A RØNNE HARBOUR	2
B RØNNE MARINA/NØRREKAAS	4
C HASLE HARBOUR	6
D HELLIGPEDER HARBOUR	8
E TEGLKAAS HARBOUR	10
F VANG HARBOUR	12
G HAMMERHAVN HARBOUR	14
H SANDVIG HARBOUR	16
I ALLINGE HARBOUR	18
J TEJN HARBOUR	20
K GUDHJEM'S WEST HARBOUR/NØRRESAND	22
L GUDHJEM'S EAST HARBOUR	26
M CHRISTIANSØ HARBOUR	28
N MELSTED HARBOUR	30
O LISTED HARBOUR	32
P SVANEKE HARBOUR	34
Q AARSDALE HARBOUR	36
R NEXØ HARBOUR	38
S SNOGEBÆK HARBOUR	40
T BAKKERNE HARBOUR	42
U BODERNE HARBOUR	44
V ARNAGER HARBOUR	46



> This is an informative guide and must NOT be used as an alternative to nautical charts or harbour pilots. Nautical chart: 180, 181, 188 and 189 depict the reliable routes to a mariner's paradise.

BAKKERNE HARBOUR



Bakkerne Harbour is one of the smallest fishery ports on the island, with a water depth of only one metre. It is also an offshore harbour and is usually filled up with local vessels, but a few small boats can visit the little fishing hamlet in good weather.

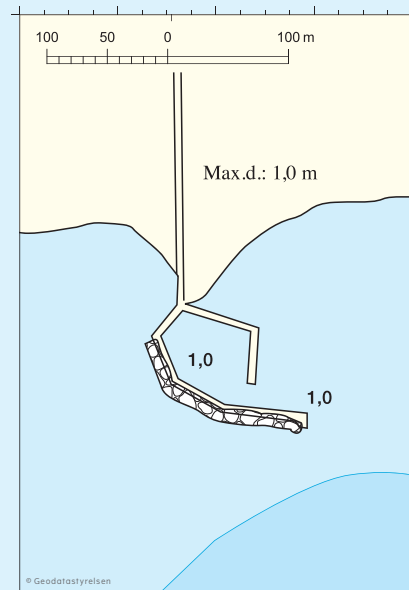
The harbour originally had only a shelter jetty with an extension. Despite hardships and poverty, the fishermen succeeded in completing the harbour in 1944. The harbour was reinforced in 1982, and, despite its modest size, it became a very active fishery harbour. Its location, close to where the Baltic seabed is steeply sloped with lots of angling spots, contributed to its success, and the harbour's smokehouse is still active.

At no time has Bakkerne lost its charming appeal. Quite the contrary: the natural surroundings, the small fishermen's sheds and harbour form a must-see environment.

The harbour has a local bicycle rental shop and crazy golf.

The biggest stream on Bornholm flows into the sea 300 metres from the harbour. A few hundred metres from where the stream flows into the sea is an interesting area with a water mill, a trout spawning building and the island's biggest freshwater system for sea trout, where countless sea trout have been caught as they migrated upstream to spawn.

Nearby is the point 55° north/15° east, marked by a granite block; this is the exact centre of the Central European Time zone.



EXCURSIONS



Øle Å / Stream	1 km	Dueodde Beach	5 km	Slusegård / Watermill	2 km
Ringborgen	2 km	Golf Course	4 km		

- Harbour
-
-
-

HARBOUR OVERVIEW

A RØNNE HARBOUR	2
B RØNNE MARINA/NØRREKAAS	4
C HASLE HARBOUR	6
D HELLIGPEDER HARBOUR	8
E TEGLKAAS HARBOUR	10
F VANG HARBOUR	12
G HAMMERHAVN HARBOUR	14
H SANDVIG HARBOUR	16
I ALLINGE HARBOUR	18
J TEJN HARBOUR	20
K GUDHJEM'S WEST HARBOUR/NØRRESAND	22
L GUDHJEM'S EAST HARBOUR	26
M CHRISTIANSØ HARBOUR	28
N MELSTED HARBOUR	30
O LISTED HARBOUR	32
P SVANEKE HARBOUR	34
Q AARSDALE HARBOUR	36
R NEXØ HARBOUR	38
S SNOGEBÆK HARBOUR	40
T BAKKERNE HARBOUR	42
U BODERNE HARBOUR	44
V ARNAGER HARBOUR	46



> This is an informative guide and must NOT be used as an alternative to nautical charts or harbour pilots. Nautical chart: 180, 181, 188 and 189 depict the reliable routes to a mariner's paradise.

BODERNE HARBOUR



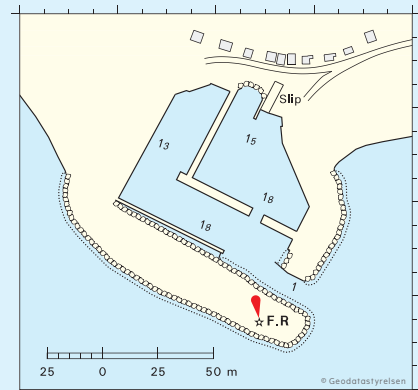
Boderne Harbour is a small private port with a water depth of only one metre. The harbour is well protected and small visiting pleasure craft are welcome.

The harbour is home to around 45 local skiffs and pleasure craft in a picturesque collection of small buildings nestled into the steep coastal slope, telling the history of the harbour.

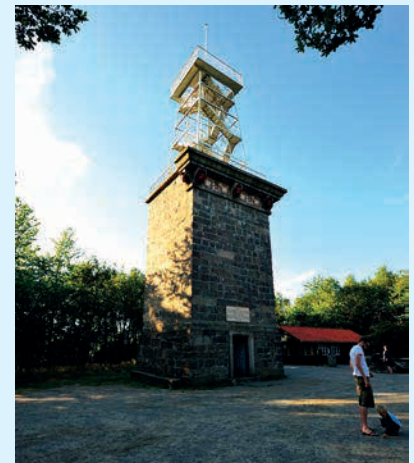
The harbour is located along the south coast, at the centre of the isle of sunshine's 50 kilometres of beautiful sandy beaches, and it is a magnificent spot for enjoying the Bornholm summer.

A café and one of the biggest fashion clothing shops on the island are situated about 250 metres from the harbour.

In the other direction, 300 metres east of the harbour, Læseåen stream flows into the sea, and an interesting network of paths follows the stream to the ingenious sluice systems which served as freshwater facilities for catching big sea trout on their way upstream.



EXCURSIONS



Natur Bornholm	5 km	Ekkodalen / Valley	8 km	Risebæk Waterfall	8 km
Lilleborg	8 km	Rytterknægten	8 km		
Horse Racing track	8 km	Almindingen	8 km		



HARBOUR OVERVIEW

A RØNNE HARBOUR	2
B RØNNE MARINA/NØRREKAAS	4
C HASLE HARBOUR	6
D HELLIGPEDER HARBOUR	8
E TEGLKAAS HARBOUR	10
F VANG HARBOUR	12
G HAMMERHAVN HARBOUR	14
H SANDVIG HARBOUR	16
I ALLINGE HARBOUR	18
J TEJN HARBOUR	20
K GUDHJEM'S WEST HARBOUR/NØRRESAND	22
L GUDHJEM'S EAST HARBOUR	26
M CHRISTIANSØ HARBOUR	28
N MELSTED HARBOUR	30
O LISTED HARBOUR	32
P SVANEKE HARBOUR	34
Q AARSDALE HARBOUR	36
R NEXØ HARBOUR	38
S SNOGEBÆK HARBOUR	40
T BAKKERNE HARBOUR	42
U BODERNE HARBOUR	44
V ARNAGER HARBOUR	46



> This is an informative guide and must NOT be used as an alternative to nautical charts or harbour pilots. Nautical chart: 180, 181, 188 and 189 depict the reliable routes to a mariner's paradise.

ARNAGER HARBOUR

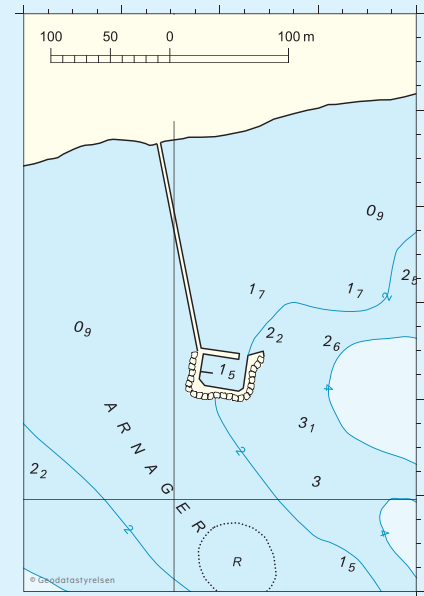


There are exciting things to see in the area for anyone interested in history and geology.

These include fossilised dinosaur footprints and the remains of mining operations where phosphate rock was previously extracted.

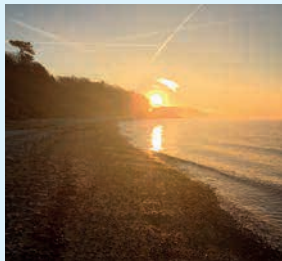
In addition, there are remains of the phosphate-rock shipping facilities east of the harbour and remains of the old harbour west of the harbour.

The harbour is well-protected behind the shallow Arnager Reef. The reef extends to the south-east and abounds with potential for skin diving. The nautical map shows the safe approach to the harbour.



Arnager is an offshore harbour connected to the coast by the longest wooden bridge over open sea in northern Europe.

Arnager Harbour is the only port along the south coast that can be entered by keelboats with a two-metre draught.



Visiting craft are welcome in the harbour, and in good weather, visitors can dock on the inner side of the pierhead. In addition to a small gallery, the fishing hamlet features a herring smokehouse with a restaurant.

EXCURSIONS



Nylars Round church 3 km



Natur Bornholm 5 km



Harbour

200 m



"Thor" at Helligdomsklipperne cliffs
Sunset at Arnager



BRIGHT GREEN ISLAND involves all the people of Bornholm, our daily life and the island's future. It involves the green transformation of our community – embracing the residents of Bornholm, as well as the island's undertakings, infrastructure and many visitors.

Read more on www.brightgreenisland.dk

BRIGHT GREEN ISLAND BORNHOLM




























Smoked herring
Relax by the harbour
Ekkodalen / Valley
Penyllan Brewery

Cruise ship at Gudhjem
Helligdomsklipperne / Cliffs
Arnager Beach
Harbour idyll

Pictogram explanations:

-  Cold running water
-  Electrical outlet (220 V)
-  Shower
-  WC
-  Coin laundromat
-  Service vending machine
-  Crane/rigging sheers
-  Slipway
-  Slipway
-  Shipyard
-  Garage
-  Sailmaker
-  Clubhouse or the like
-  Television
-  Compressed air
-  Bicycle rental
-  Car rental
-  Cafeteria or restaurant
-  Provisions available
-  Boat equipment
-  Petrol
-  Diesel oil
-  Flaskegas
-  Internet
-  Defibrilatory

Practical information:

All of Bornholm's harbours want to offer the best facilities for a fine holiday experience: showers, toilets, drinking water and electricity, and - at many harbours - wireless internet. (See the pictograms for each harbour).

If the facilities are not located right on the quay, the distance from quay to facility will be indicated. If you would like assistance from the motor repair workshop, sailmaker, boatyard or mobile crane, please contact the harbour master who will put you in touch with the business you need.

Useful phone numbers:

Alarm:	112
On-call doctor	1813
Police	114
Pharmacy w/24-hour service	+45 5695 0130
Naval District Bornholm	+45 5694 2400

We would like to thank the following for kindly lending their photographs:

www.hvadihimlen.dk, Destination Bornholm, James Edward Bourne, Melsted Badehotel, www.wonderfestivall.dk, Nordlandet Hotel, Bay Frost Cafe og Juveler, Svaneke Bryghus, Cafe Kaas, Nørrekås Ishus, Sandvig Is Kalas, Penyllan Brewery, www.bornteksamling.dk, Beach Party, www.familieferiebornholm.dk, www.367ture.dk, Bornholms Kunstmuseum

Funding:

This guide was funded by the European Union (European Regional Development Fund) under the auspices of the Interreg South Baltic Programme, 2014-2020.

Translation:

Goodale Communications

Layout and production:

Hakon Holm Grafisk, DK-3700 Rønne

